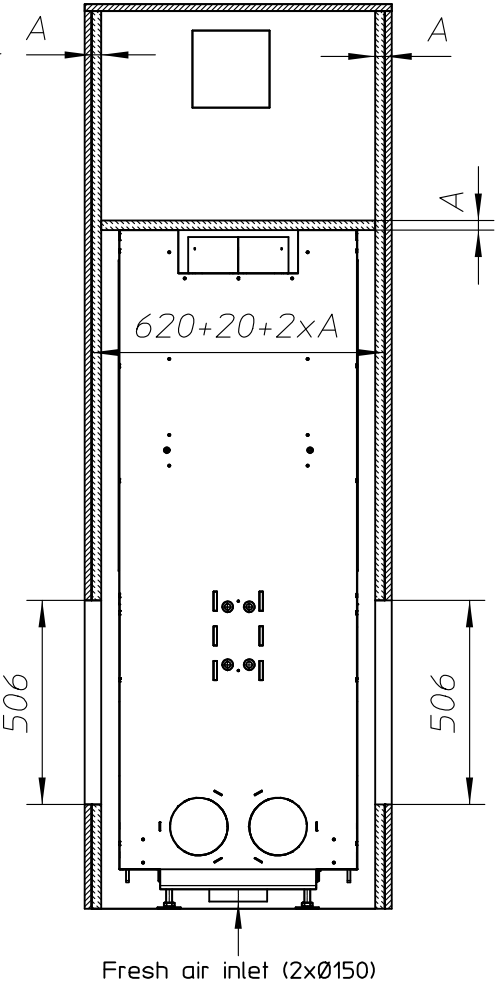
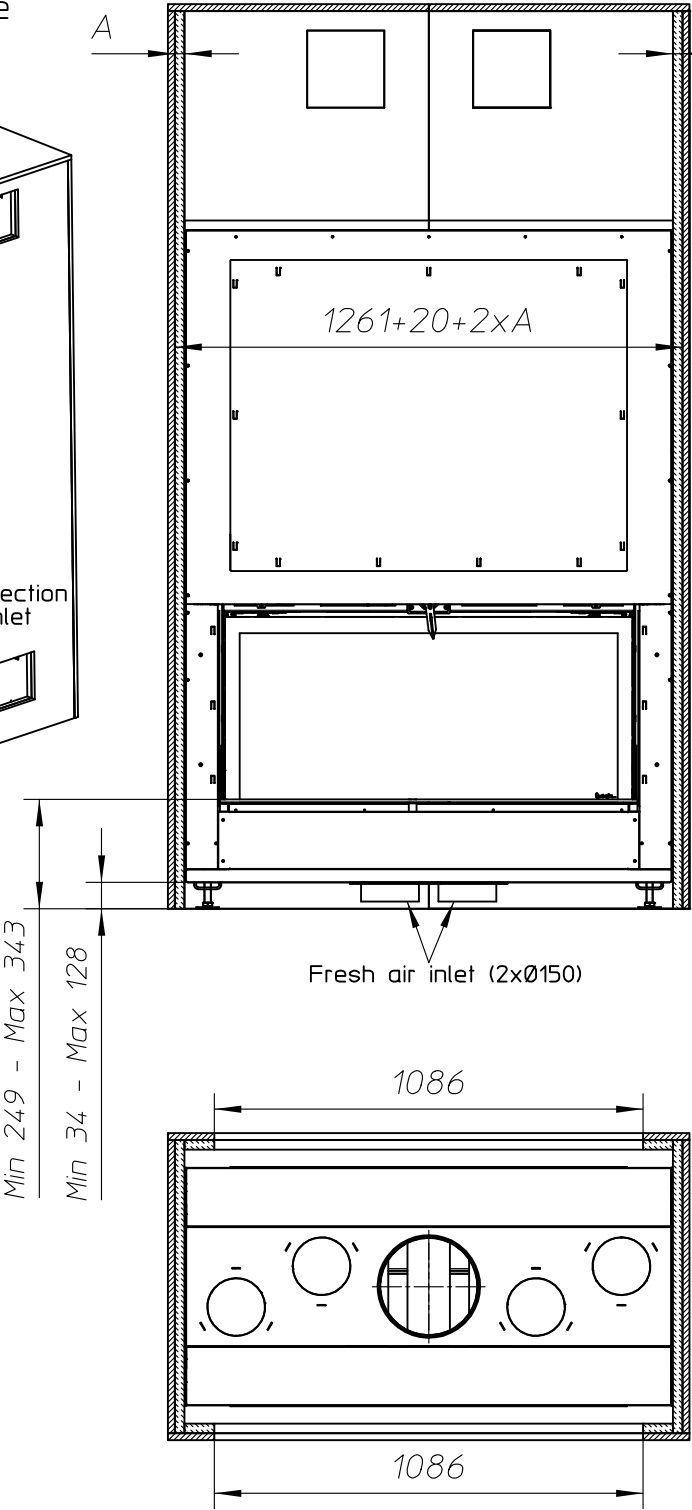
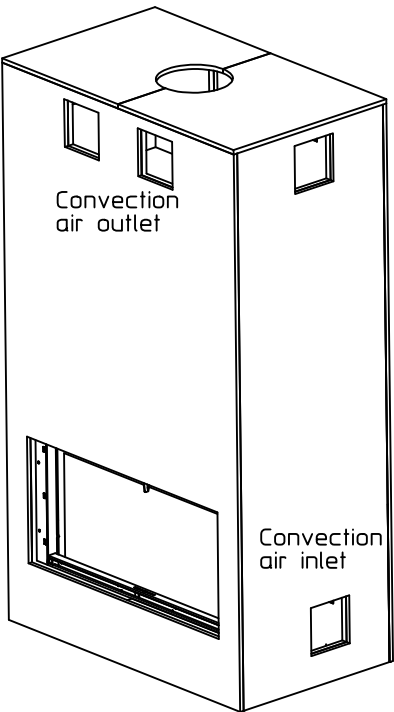


Without finishing frame



Combustable finishing material
Insulation (thickness see table)

ULTIME D Patented

Metalfire

Technical Document

ULTIME D MF 1050-50 WHE T

Prescribed insulation thickness (mm)

Combustable finishing material

Metalfire recommended
SILCA T 300
(TC = 0,09 W/mK)

A = 25mm

Non-combustable finishing material

non-combustable
materials
structural building items
EXCLUDED e.g. load bearing walls

A = 0mm

TC = thermal conductivity NC = non-combustable

First aid and technical support:

- support@metalfire.eu
- +32 9 261 51 90

scale 1:20

www.metalfire.eu EN 13229

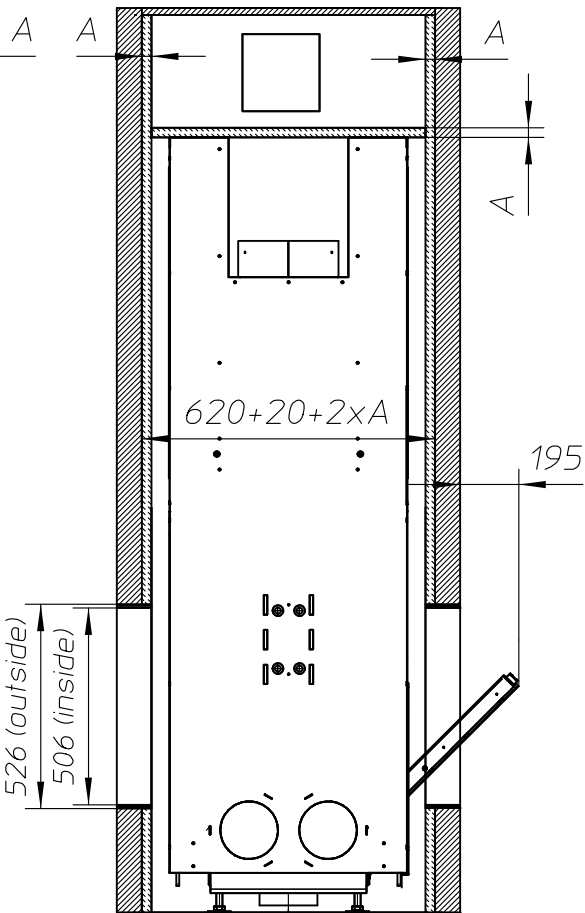
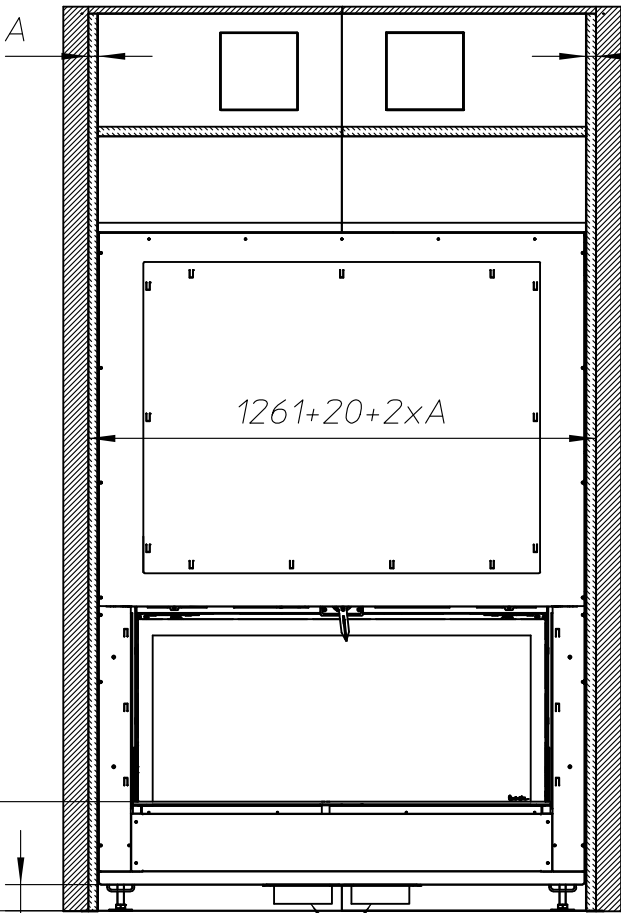
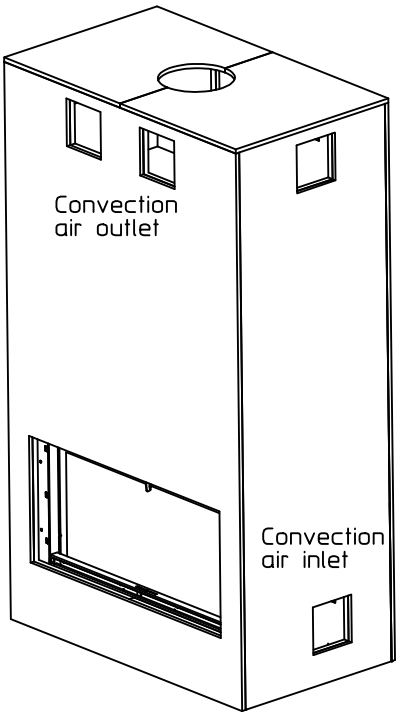
General dimensional tolerances up to 6mm
Metalfire preserves the right to modify specifications without previous notice

Rev.
-

CE

Sheet
2/5

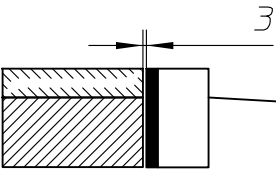
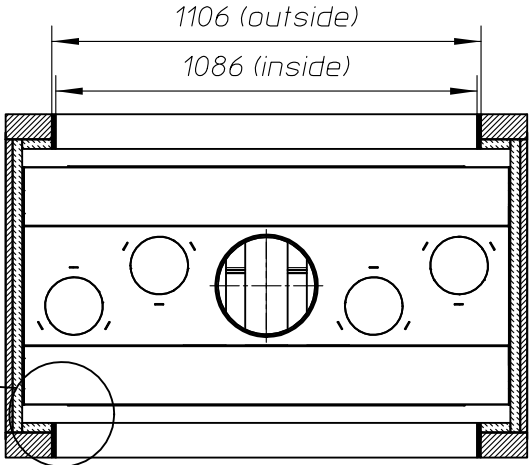
With finishing frame 90/10



Min 249 - Max 343
Min 34 - Max 128

Fresh air inlet (2xØ150)

Fresh air inlet (2xØ150)



Combustible finishing material
Insulation (thickness see table)

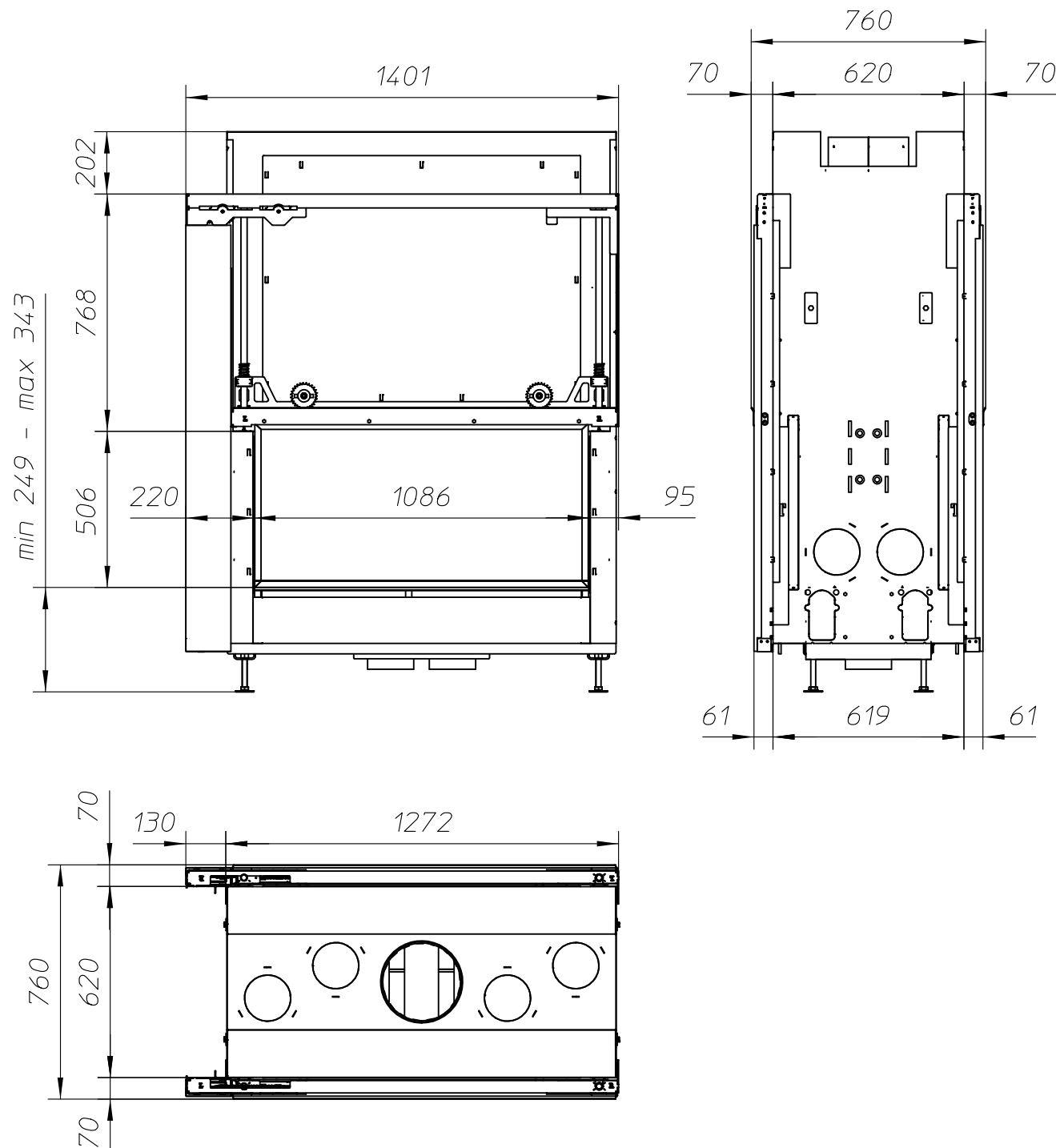
ULTIME D
Patented
Metalfire
Technical Document
ULTIME D MF 1050-50 WHE T
Prescribed insulation thickness (mm)
Combustible finishing material
Metalfire recommended
SILCA T 300
(TC = 0,09 W/mK)
A = 25mm
Non-combustible finishing material
non-combustible
materials
structural building items
EXCLUDED e.g. load bearing walls
A = 0mm
TC = thermal conductivity NC = non-combustible

First aid and technical support:
- support@metalfire.eu
- +32 9 261 51 90

scale 1:20
www.metalfire.eu EN 13229
General dimensional tolerances up to 6mm
Metalfire preserves the right to modify specifications without previous notice

Rev. -
CE
Sheet 3/5

WITH 2 X FIRESCREEN - NO FINISHING FRAME



ULTIME D Patented

Metalfire

Technical Document

ULTIME D MF 1050-50 WHE T

Dimensions (mm)

- combustion opening WxH: 1086 x 506
- external WxDxH: 1401 x 760 x 2069
- fresh air intake: 2 x Ø150
- flue gas outlet: Ø250

Technical Data

- ecolabel: A
- capacity: 25.2kW
- efficiency: 79%
- CO (volume with 13%O₂): 0.05%
- dust (volume with 13%O₂): 30mg/Nm³
- weight: 400kg
- convection air inlet: min.700cm² (4 x Ø150)
- convection air outlet: min.700cm² (4 x Ø150)

First aid and technical support:

- support@metalfire.eu

- +32 9 261 51 90

scale 1:20

Rev.
-

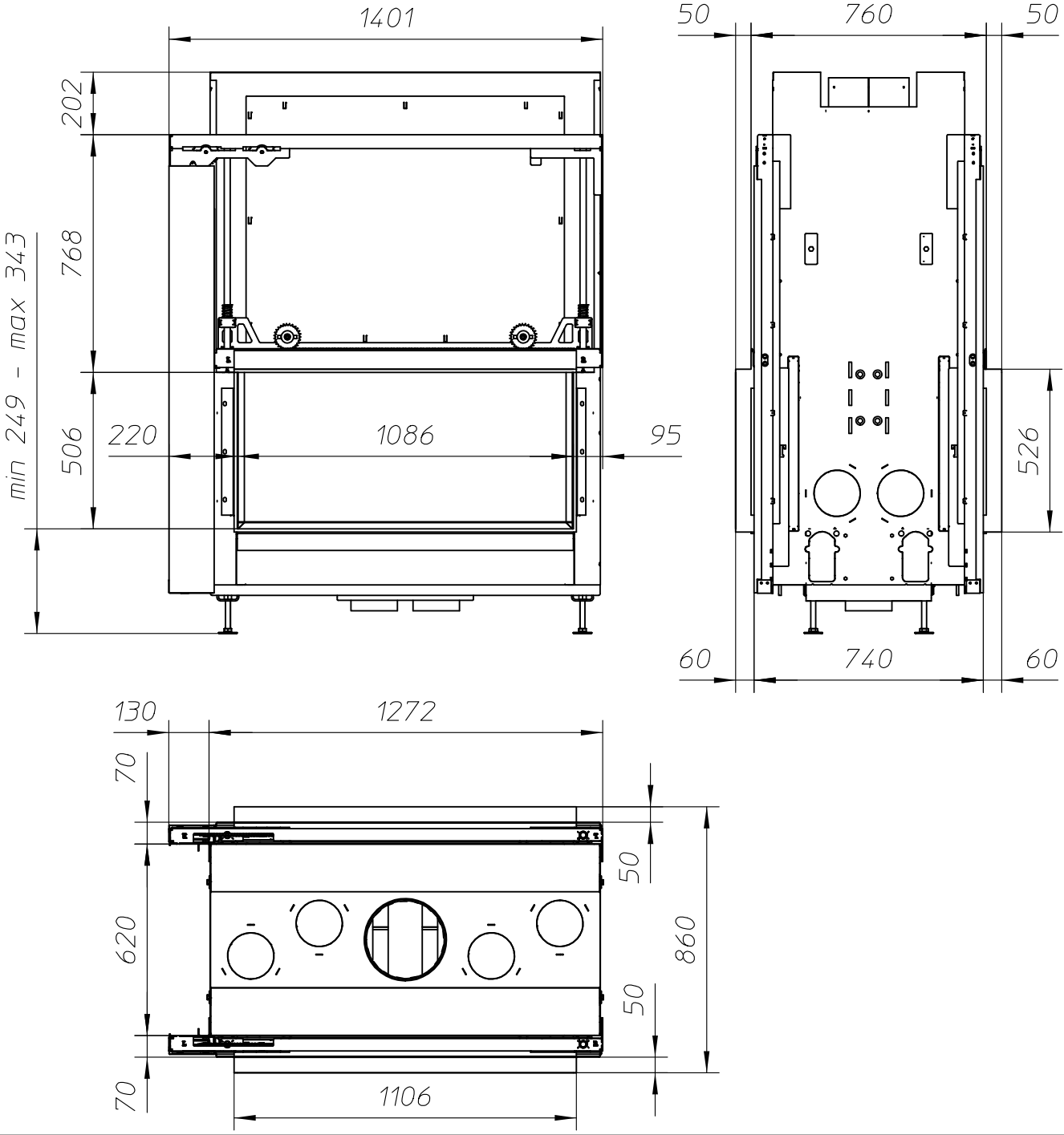
www.metalfire.eu EN 13229

CE

General dimensional tolerances up to 6mm
Metalfire preserves the right to modify specifications without previous notice

Sheet
4/5

WITH 2 X FIRESCREEN AND FINISHING FRAME 120/10



ULTIME D^{Patented}

Metalfire

Technical Document

ULTIME D MF 1050-50 WHE T

- Dimensions (mm)**
- combustion opening WxH: 1086 x 506
 - external WxDxH: 1401 x 860 x 2069
 - fresh air intake: 2 x Ø150
 - flue gas outlet: Ø250
- Technical Data**
- ecolabel: A
 - capacity: 25.2kW
 - efficiency: 79%
 - CO (volume with 13%O₂): 0.05%
 - dust (volume with 13%O₂): 30mg/Nm³
 - weight: 400kg
 - convection air inlet: min.700cm² (4 x Ø150)
 - convection air outlet: min.700cm² (4 x Ø150)

First aid and technical support:

- support@metalfire.eu
- +32 9 261 51 90

scale 1:20	Rev. -
www.metalfire.eu EN 13229	CE
General dimensional tolerances up to 6mm Metalfire preserves the right to modify specifications without previous notice	Sheet 5/5